

Outline

Swedish sheep breeding objectives:
Traits recorded in the national programme
Health measures within Elitlamm
How farmers use the service
Tail length



**Glada
Fåret**

Titti Strömne
Sheep consultant, Sweden
titti@gladafaret.se
Instagram: @glada_faret

Swedish sheep breeding objectives

Production



Exterior

Traits recorded in national programme

Updated EBV:s 2 times per year (July, Sept)

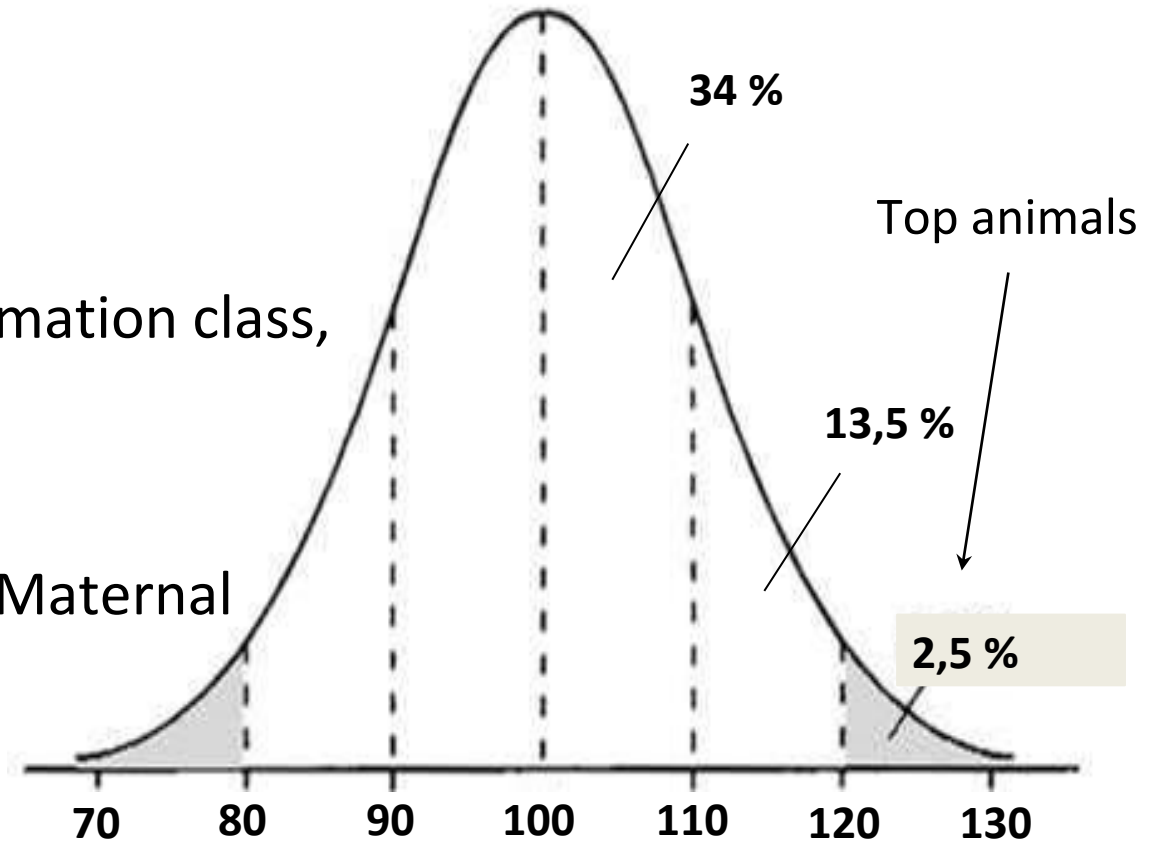
All 10 breeds

- Birth Weight Direct, Maternal
- Growth rate to 110 d Direct, Maternal
- Conformation at 110 days
- Carcass traits: growth rate to slaughter, conformation class, fat class
- Litter Size 1, 2+

Meat breeds (terminal): Growth rate 60 d Direct, Maternal

Wool breeds: Wool traits

Pelt breeds: Pelt traits



Elitlamm



- Internet based service for sheep farmers
- Sheep farmers register lambing's, weights, treatments etc.
- Only 1 ‰ register by paper
- Owned by a family company
- Cooperation with the Swedish Sheep Farmers Association

elitlamm.com/pub/default.aspx

STARTSIDA PROGRAM MARKNADSPLETSEN KURS & RÅDGIVNING OFFICIELL HÄRSTAMNING GENBANK KONTAKTA OSS

Startsida

Ditt Elitlamm:
[Starta Elitlamm](#)
[Starta Stalljournal](#)
[Starta Foder](#)

Du är inloggad som Titti Strömne
[Logga ut](#)

Du har fåren - vi har programmen!
Med Elitlamms färdprogram samlar du all information om dina djur på ett och samma ställe, du utvecklar dina färdkunskaper och kan smidigt samarbeta med andra färdbesättningar. Programmen ger dig god kontroll, stor säkerhet och ökad fårglädje!

4 får eller 400 får - det finns program för dig
Elitlamm vänder sig till både avels- och produktionsbesättningar, fritidsbesättningar och besättningar som inriktar sig på bevarandearbete. Programmen passar både stora och små besättningar, ger stöd oavsett vilken inriktning din gård har och vilka fårraser du har satsat på. 3000 besättningar i Sverige och Danmark använder Elitlamm.

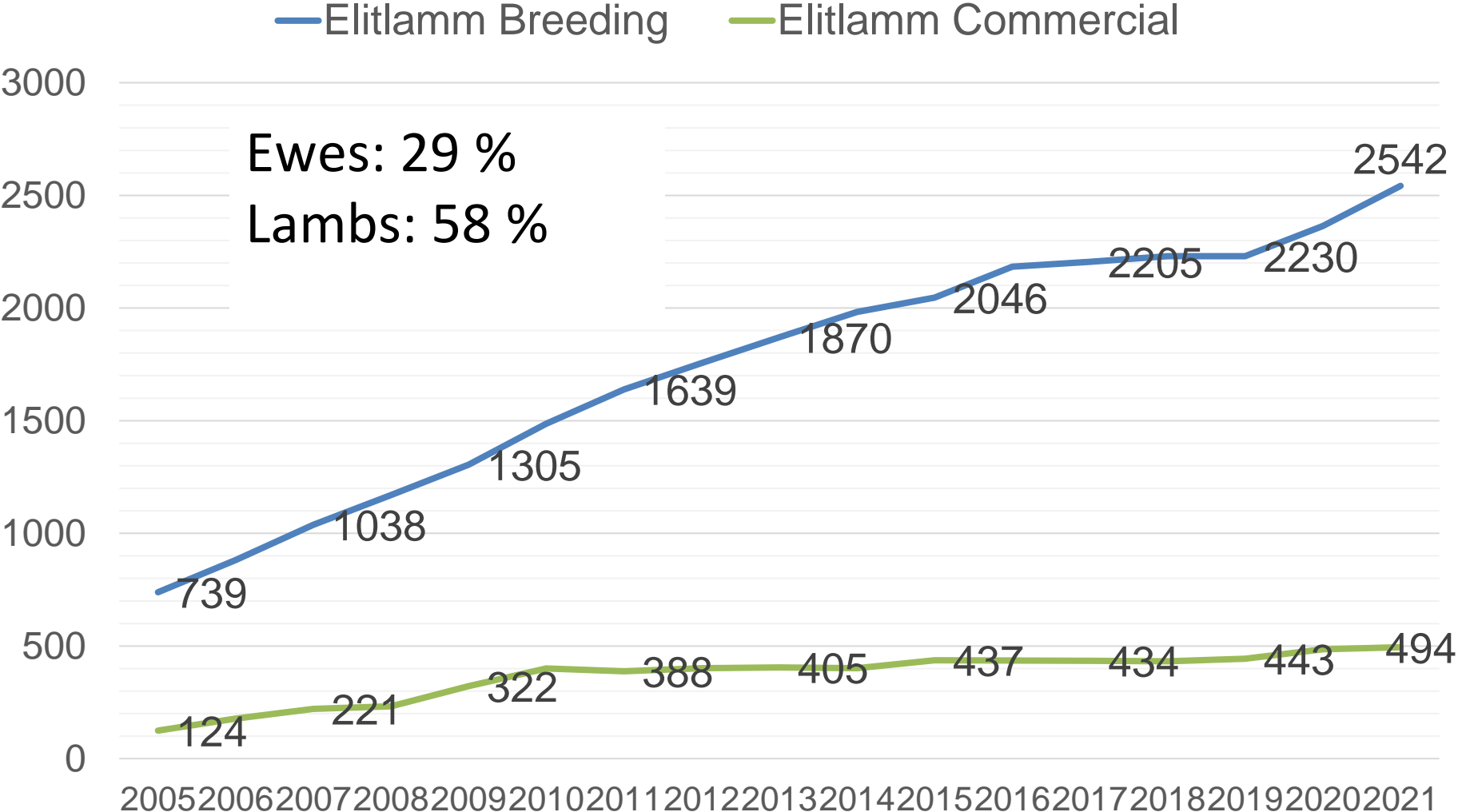
Marknadsplatsen
På Marknadsplatsen ser du annonser från andra besättningar och kan annonsera ut dina egna djur. [Läs mer](#)

De senaste annonserna
2022-10-04
Gotlandstackor
Trevliga tackor säljes då vi fokuserar på ullraser. Alla har lammat i år...
Dalarnas län
[Marknadsplatsen...](#)
2022-10-03
Bagglamm Renrasig Dorper
Ett bagglamm född i april 2022. Mv-fri och F-status.

Vad är Elitlamm?

0:00 / 6:49

Number of flocks in Elitlamm 2005-2021



Why do sheep farmers use Elitlamm

- All data regarding the flock collected in one place
- On-farm register, Medical journal
- Recorded data provides statistics and KPI:s
- Mobile version
- Safe
- Fixed annual cost
- Support included
- Meant to spread joy among sheep farmers



Health treatments recorded

Sheep farmer record treatments on individuals or groups:
 To improve animal health - shearing, foot trimming, BCS
 And "standard" treatments with drugs - deworming, vaccinations,
 quarantine footbathing
 Automatic transfer to medical journal if drug is used



JOURNAL Användning av läkemedel och andra preparat/produkter

Koby/Titti Strömne, Titti Strömne

Datum för behandling	Djurslag	Djurets identitet	Diagnos	Läkemedlets namn och dosering	Behandlings-tidens längd	Karenstid		Förskrivande veterinär	Person som utfört behandlingen	Resultat
						Dagar efter avslutad behandling	Sista datum med karenstid			
2022-09-13	Får	SE275821-22001	Avmaskning i isolering	Noromectin 0,8 mg/ml 22 ml		10	2022-09-23	Fredrik Ehn	Titti Strömne	Uppföljande prov visade 0 EPG
2022-09-10	Får	SE275821-22001	Fotbad in i isolering	Zinksulfat 10 %				Ingen	Titti Strömne	
2022-07-01	Får	34 djur	Förhöjd EPG i träckprov	Valbazen 19 mg/ml 7,5 ml		14	2022-07-15	Ulrika König	Titti Strömne	förhoppningsvis mindre parasitbörda
2022-05-05	Får	17 djur	Förhöjd EPG i träckprov	Valbazen 19 mg/ml 23 ml		14	2022-05-19	Ulrika König	Titti Strömne	
2022-04-04	Får	SE73637-15008	Misstänkt livmoderinfektion	Penovet 300 mg/ml 8 ml	6	14	2022-04-23	Towa Lindström	Titti Strömne	Frisk



Special care of sheep

Agri-environmental payment introduced in 2016

Payment for extra animal health actions (≈ 23 £/sheep/y)

Some of the requirements:

- BCS 3 times per year (minimum)
- shearing 2 times per year
- quarantine routines when introducing new sheep in the flock

The number of recordings of BCS has increased in Elitlamm



How can we use the recordings?

To evaluate the flock health

For example, to improve lamb survival

- by registering lambing's
- by recording when lamb dies and the cause (if known)

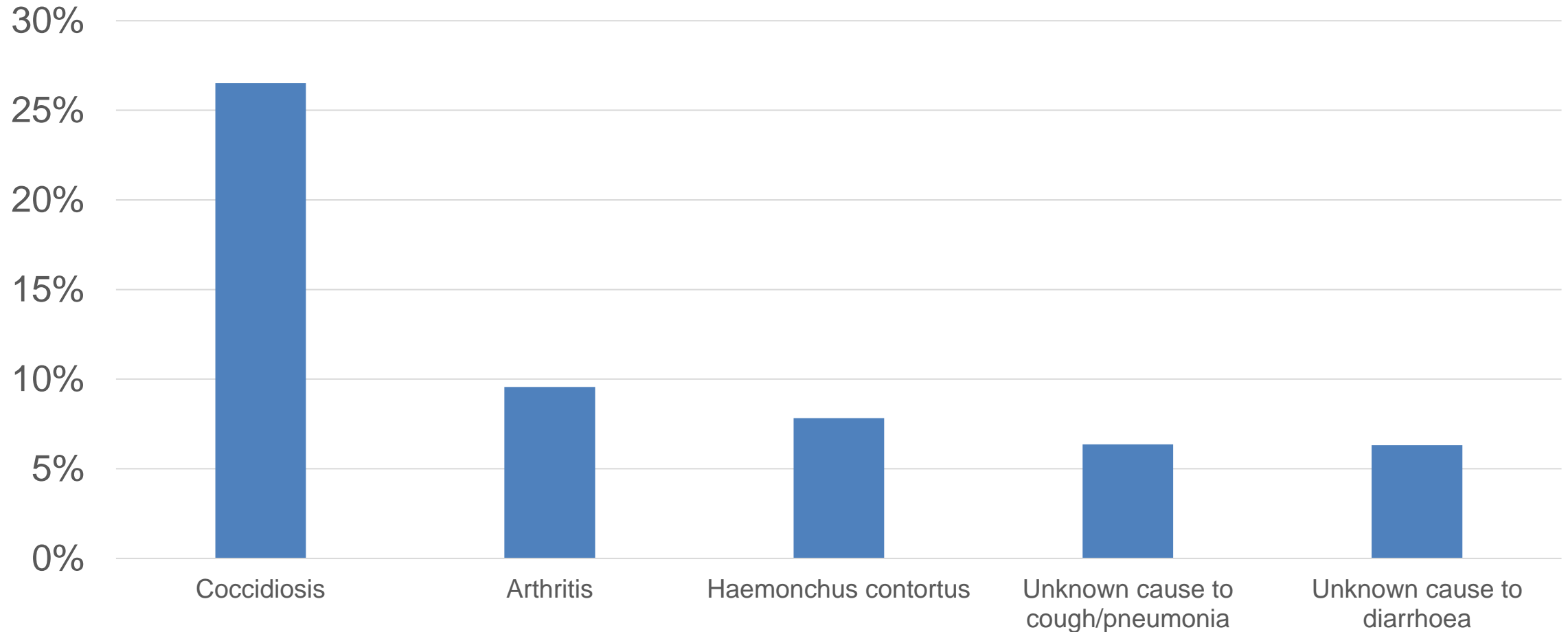


Lamb mortality 2021 recorded in Elitlamm

	Percent	Number
Lambs born		144 376
Stillborn	5,1 %	7383
Dead within 5 d	1,5 %	2108
Dead within 6-60 d	1,5 %	2092
Dead after 60 d	2,9 %	4236
Total	11 %	15 819



Most common lamb diseases recorded in Elitlamm 2015-



Thanks!

Many farms register a lot of data regarding their flocks, the industry could benefit from additional analysis of the data.

Titti Strömne

Sheep consultant, Sweden

titti@gladafaret.se

Instagram: @glada_faret



Tomas Olsson

- Who am I:
Sheepfarmer, working with sheep for 30 year
Run Norrby Farm with 1000 ewes.

- Chairman for Sweden's Lambproducers Association.

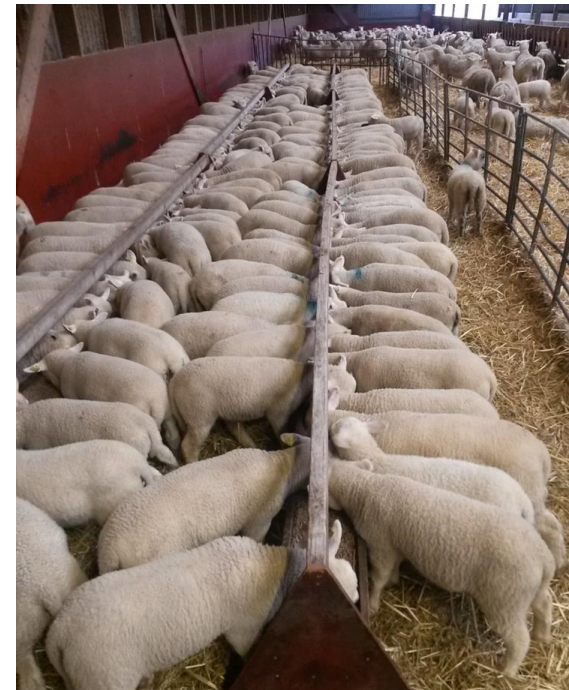
Vice Chairman LRF Mälardalen, The Federation of Swedish Farmers in Mälardalen

- I will talk about:
Parasite situation in Sweden.
How to manage sheep with out tailing.
Own experience and national strategies.



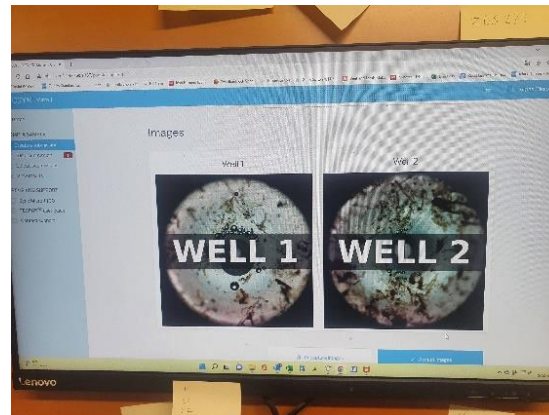
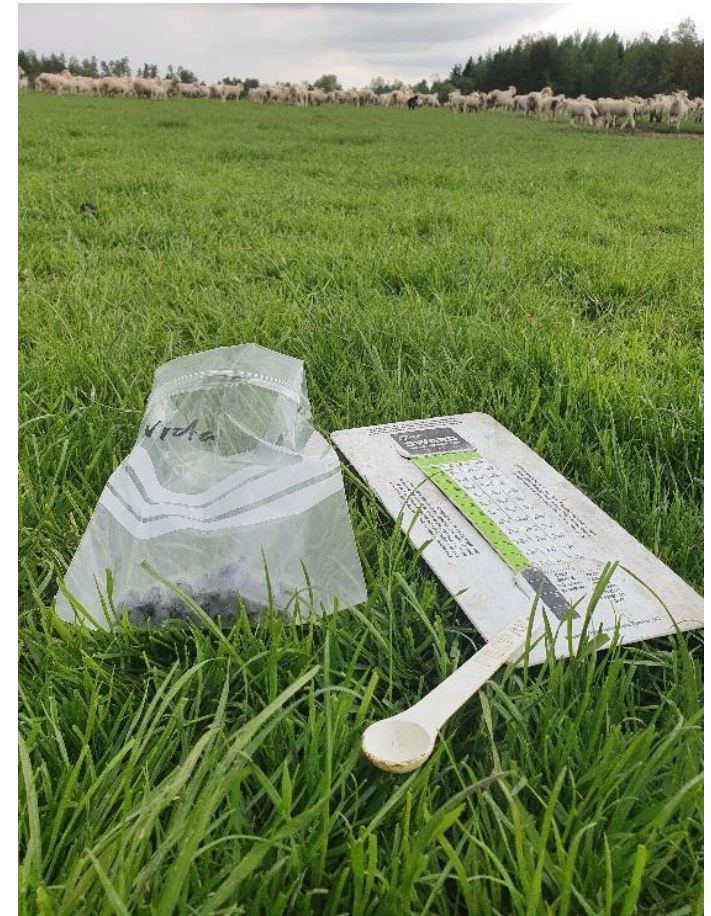
Norrby Farm

- **Business**
 - Sheepfarming 1000 ewes
 - Cattle 10 cows with calves
 - Cereals
 - Contracting with, baling, lime and manure spreading
 - Woodland
- **Production**
 - 300 FinnDorset cross for winter lambing, indoor production
 - 400 FinnDorset Spring lambing
 - 200 Pedigree Dorset, Texel Suffolk spring lambing



Parasite control in Sweden

- Vet prescription to get worm drencher since 2007.
- FEC test result to get prescription.
- Two laboratories in Sweden and the main part go to VIDILAB
- A few farm use FecPak.
- Upcoming resistance problem in Sweden, a few new farm each year.
- Common to take resistance check after drenching in quarantine.
- Heamonchus is a big challenge in Sweden



Parasite Control in Sweden

- Sample sends to laboratory by mail
- The result by e-mail to farmer and vet.
- 3 sample get into 1 analyze.
- You get 10 species and % of Heamonchus
- Everything get into a database



Sida 2(16)
FECRT - Får
Slutgiltig - SVARSRAPPORT
Utfärdad av ackrediterat laboratorium
Report issued by an accredited laboratory
Tomas Olsson
Norrby 106
73692 KUNGSÖR

Kundnummer: 66872
Journalnummer: FECRT22-00051

Provsvar

Provmärkning: 22589 [Årslamm] Rapportdatum: 2022-08-05
Ankomstdatum: 2022-08-04

Analyser: McMaster

	Resultat
Trichostrongylida*	300 EPG
Varav Haemonchus*	60.0 %
T. axei misstänks*	0 %
Chab/Oes*	Parasiter ej påvisade
Nem.fil.*	Parasiter ej påvisade
Nem.spath.*	Parasiter ej påvisade
Nem.battus*	Parasiter ej påvisade
Moniezia*	-
Capillaria*	Parasiter ej påvisade

Farmstat - Some snapshots

- **Farmstat** – Project to analyze results from the database. Founded by government and it's a cooperation between the industry and authorities, for better animal health.

The project is run by *Farm & Animal Health* is an advisory company with the aim of maintaining a high level of health in an effective and profitable production in the pig, sheep and beef sectors

- Result from 2021

	No sample	No farms
Analyses	7909	1541
Fluke analyses	490	176
Lungworm (<i>Dictyocaulus filaria</i> , <i>Muellerius</i> sp, <i>Protostrongylus rufes</i>)	320	124

Let's take a look at two example!

In the analysis

Trichostrongylida

Haemonchus

T axei

Capillaria

Chab/Oes

Nem battus

Nem fil

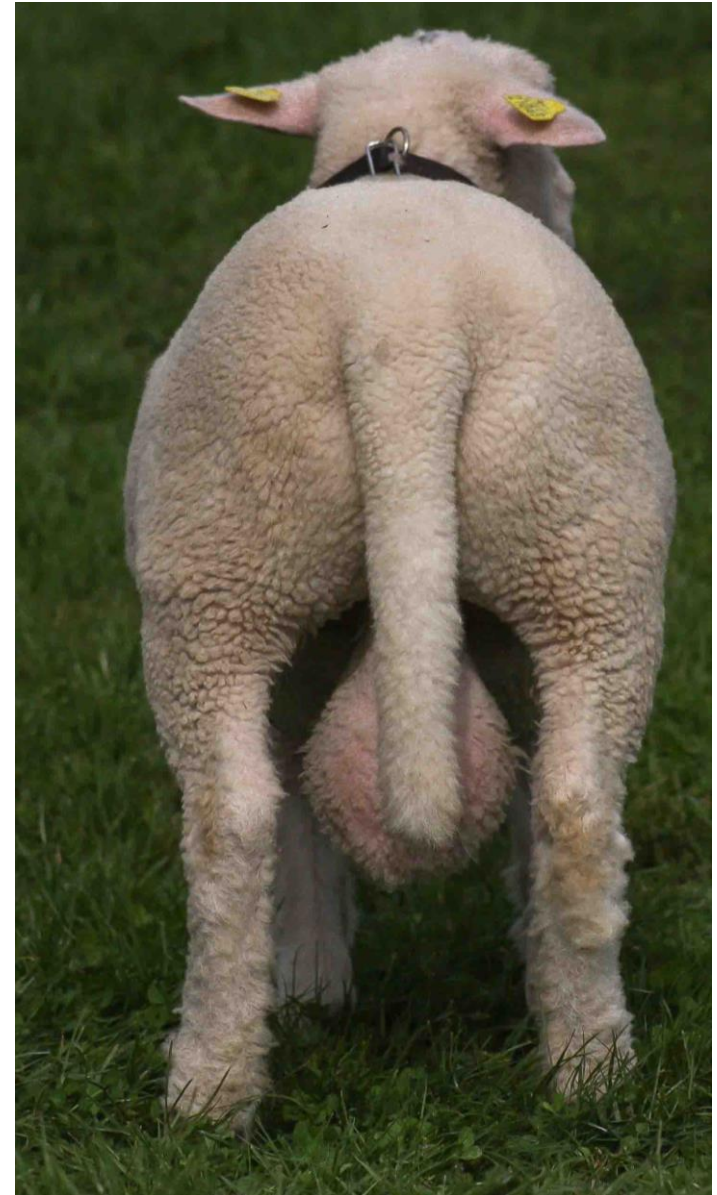
Nem spath

Coccidier

Moniezia

How to handle longtails

- Regulations from 1988 that's say that all tailing must be under anesthesia and by vet.
- **Is it a problem?**
- Yes it's challenge on Dorset and Suffolk, popular breeds in commercial flocks.
- Popular maternal ewe is Finnsheep cross Dorset for early lambing
- Suffolk is common as terminal sire for slaughter lambs.

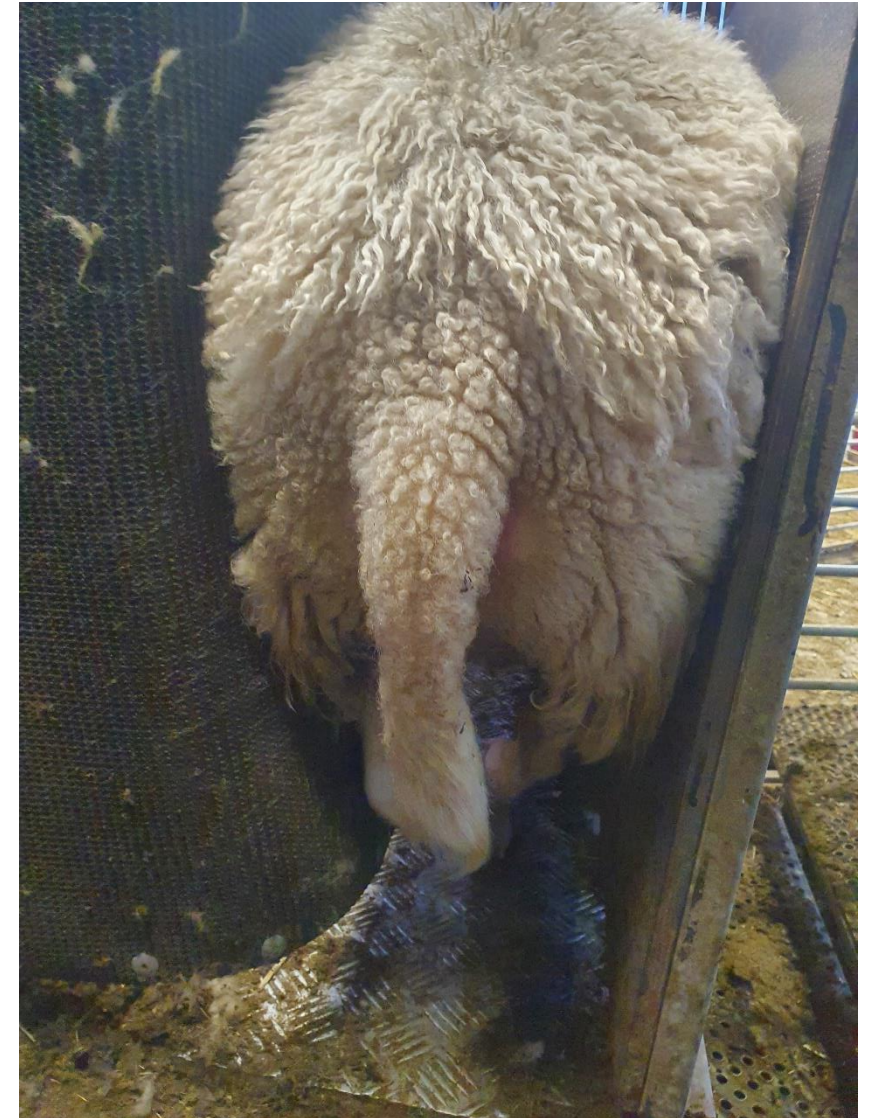


How to handle longtails

The solution for Swedish farms

- We have a climat that make it possible.
- but we have climate change
- A lot of dagging, and crutching.
- Breeding, a challenge be course we need new genetic from outside Sweden.
- There is big variation in breed, so breeding is possible, we remove the one that doesn't work!
- Never save a dirty lamb as a replacement.
- It work in first cross breeding.

Let me show you an example!

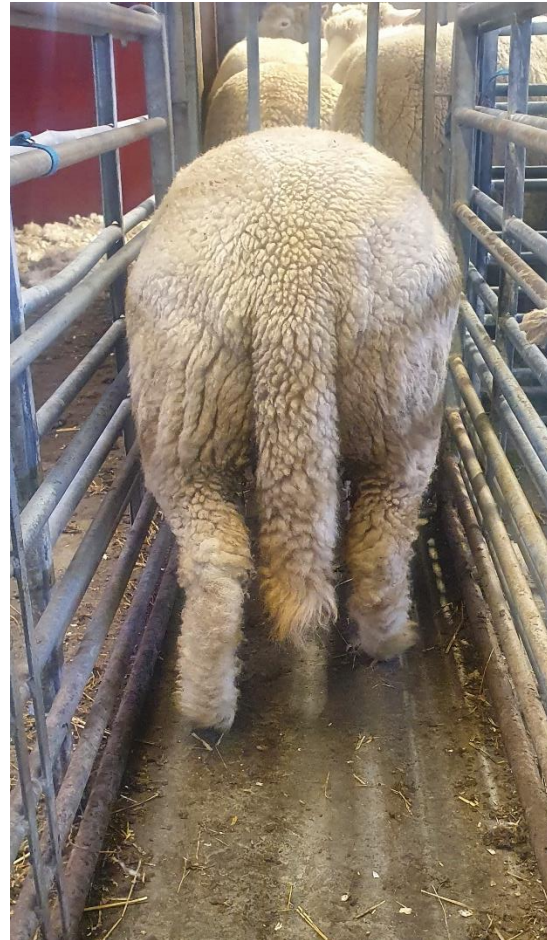


How to handle longtails

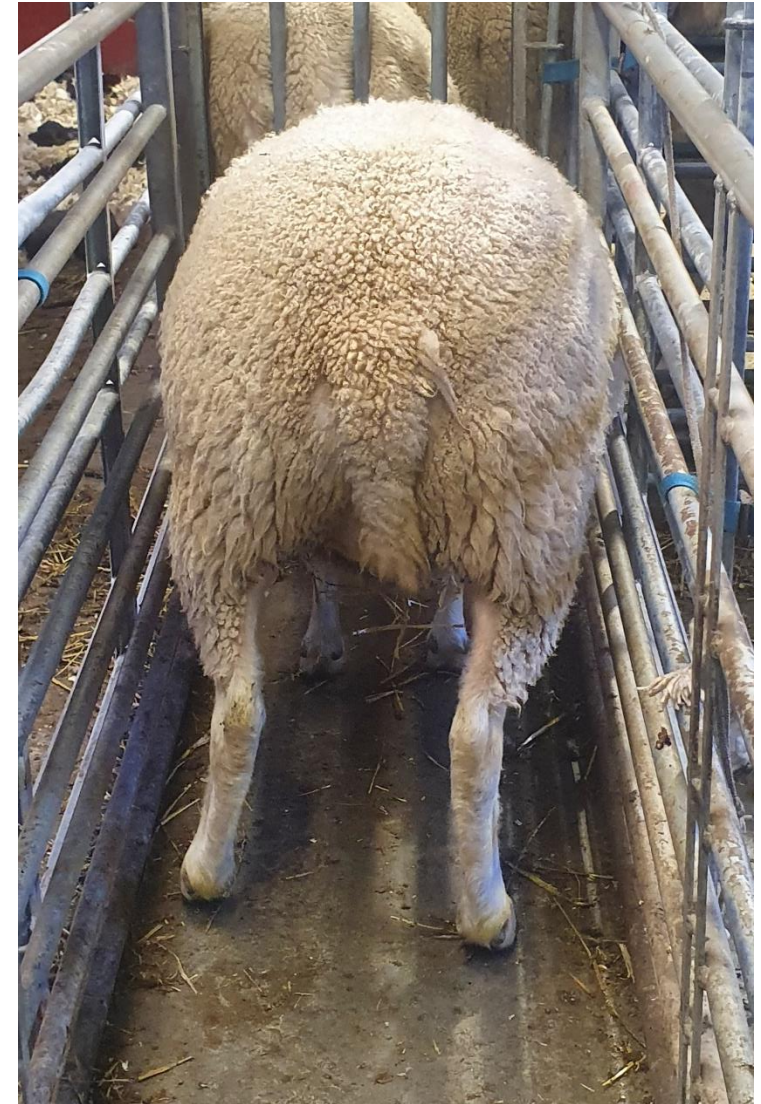
Finnsheep



Dorset



FinnDorset cross



Thanks!

Contact:

Tomas Olsson

tomas@norrbylamm.se

Instagram: @norrby106

