



HENDRE-IFAN-GOCH FARM

R.EDWARDS - HENDRE-IFAN-GOCH FARM

HENDRE IFAN GOCH FARM

- Based in Bridgend, South Wales - Grandfather bought the farm 1975
- 225 acre farm (500ft-1350ft above sea level)
- > 2 meters of rainfall a year (80")
- Hill sheep farm - 600 ewes & 150 ewe lambs
- Single sire mating
 - 400 White face Mules/Aberfields to terminal sires (190 AI)
 - 200 Welsh mules/Speckled face to maternal sires



HENDRE IFAN GOCH FARM

- Lamb indoors & feed pit silage in TMR diet
- EID record all Ewes & Tups with close monitoring of BCS, regular weighing, linking dams to sires for known parentage of lambs
- Lambs DLWG monitored every 2 weeks, act as necessary
- Lambs finished off grass
- Joined RamCompare in summer 2017
- Introduced “rotational grazing” in spring 2018
- Grass Check GB farm Spring 2019
- Farming Connect Demo farm 2019



FARMING
connect



Ram**COMPARE**



Grass
Check

EID technology - changed our farming system so much

- Enabled us to do trials,
- Record facts
- Make our own decisions based on results (not someone trying to sell something)
- Eliminate problems like prolapses (along with TMR)
- Reduce udder problems & feet problems
- Keep lambs performing (growth)
- Solve problems before its too late (weight loss)
- See what breeds perform and thrive on your farm.
- Draft stock on performance/condition/age/born as (singles/twins)
- Ultimately Improve our overall flock of ewes that is an ongoing process.





The logo for 'RamCOMPARE' features a row of six sheep silhouettes in black and grey, standing on a green, curved base that resembles a grassy hill. Below the silhouettes, the word 'Ram' is in a grey sans-serif font, and 'COMPARE' is in a larger, bold, black sans-serif font.



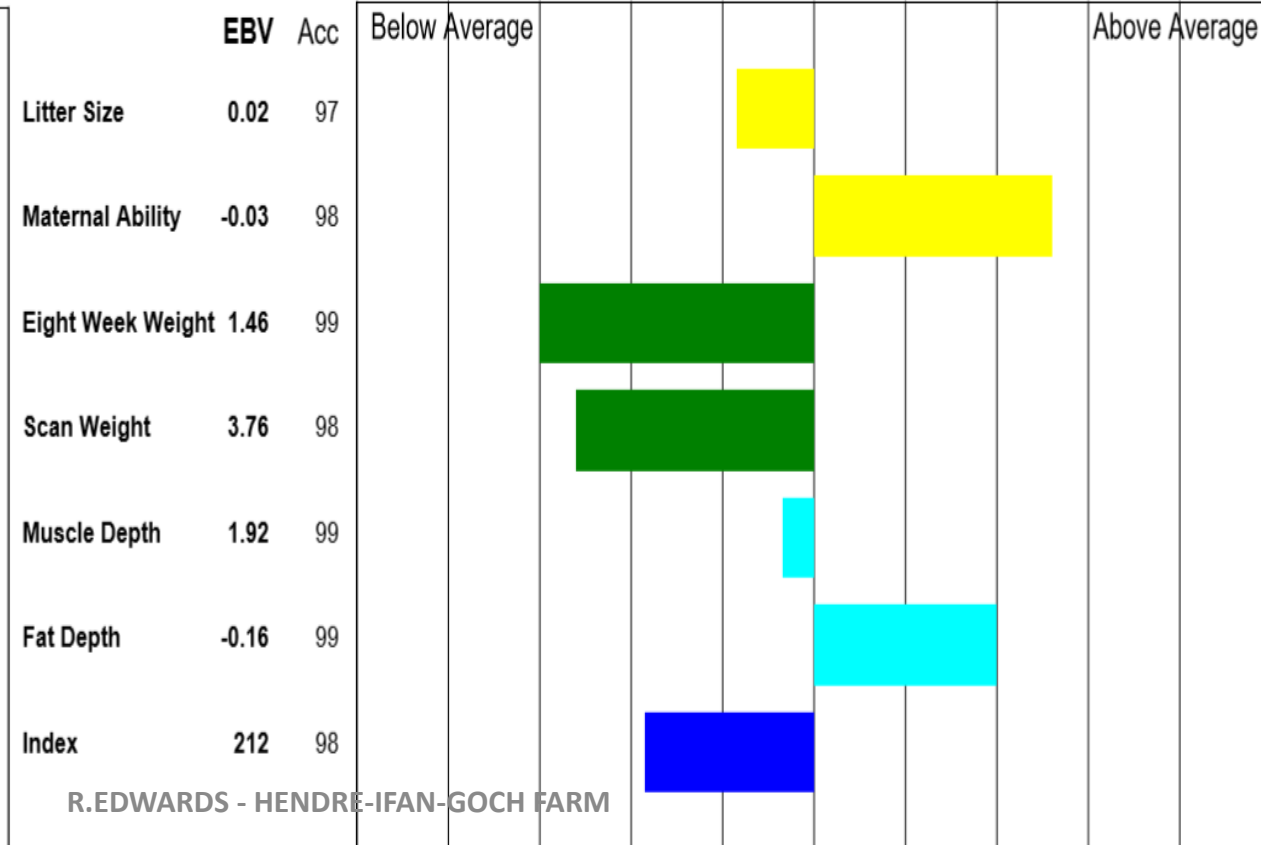
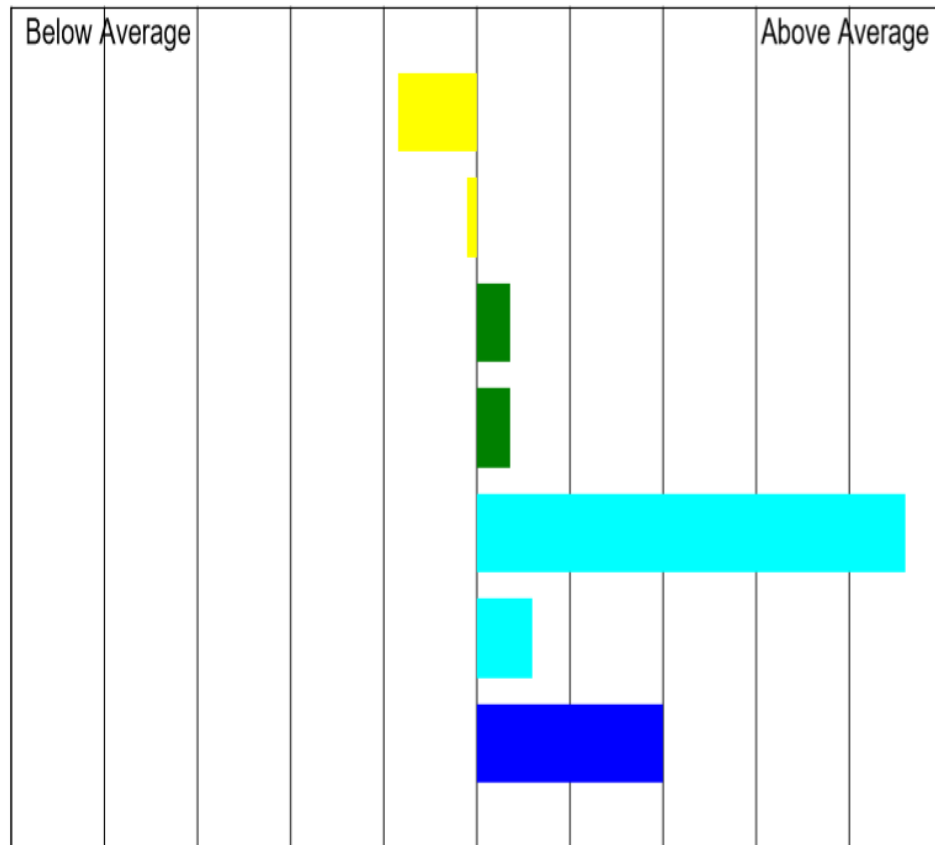
Two Texel Tups With Very Different EBV's (2017 Topping)



Ram 1



Ram 2



***Ram 1 Had a +1kg difference in Birth weight to Ram 2**

***Ram 1 Had a difference of +2% on its Kill out % to Ram 2**

***0.8kg carcass-40kg liveweight**

***Ram 1's average weight was 0.2kg live weight less going to abattoir, but killed out 0.5kg carcass weight heavier than Ram 2**

***Ram 1 had a 19 day average to slaughter quicker than Ram 2**

79% E&U 2/3L/3H Grades

2018 Lambs

55.6% E&U 2/3L/3H Grades

Ram 1							
	1	2	3L	3H	4L	4H	5
E		17.7%	6.5%				
U	4.8%	17.7%	37.1%				
R	1.6%	8.1%	6.5%				
O							
P							

Ram 2							
	1	2	3L	3H	4L	4H	5
E		3.2%	9.5%				
U	3.2%	17.5%	23.8%	1.6%			
R	1.6%	11.1%	27.0%	1.6%			
O							
P							

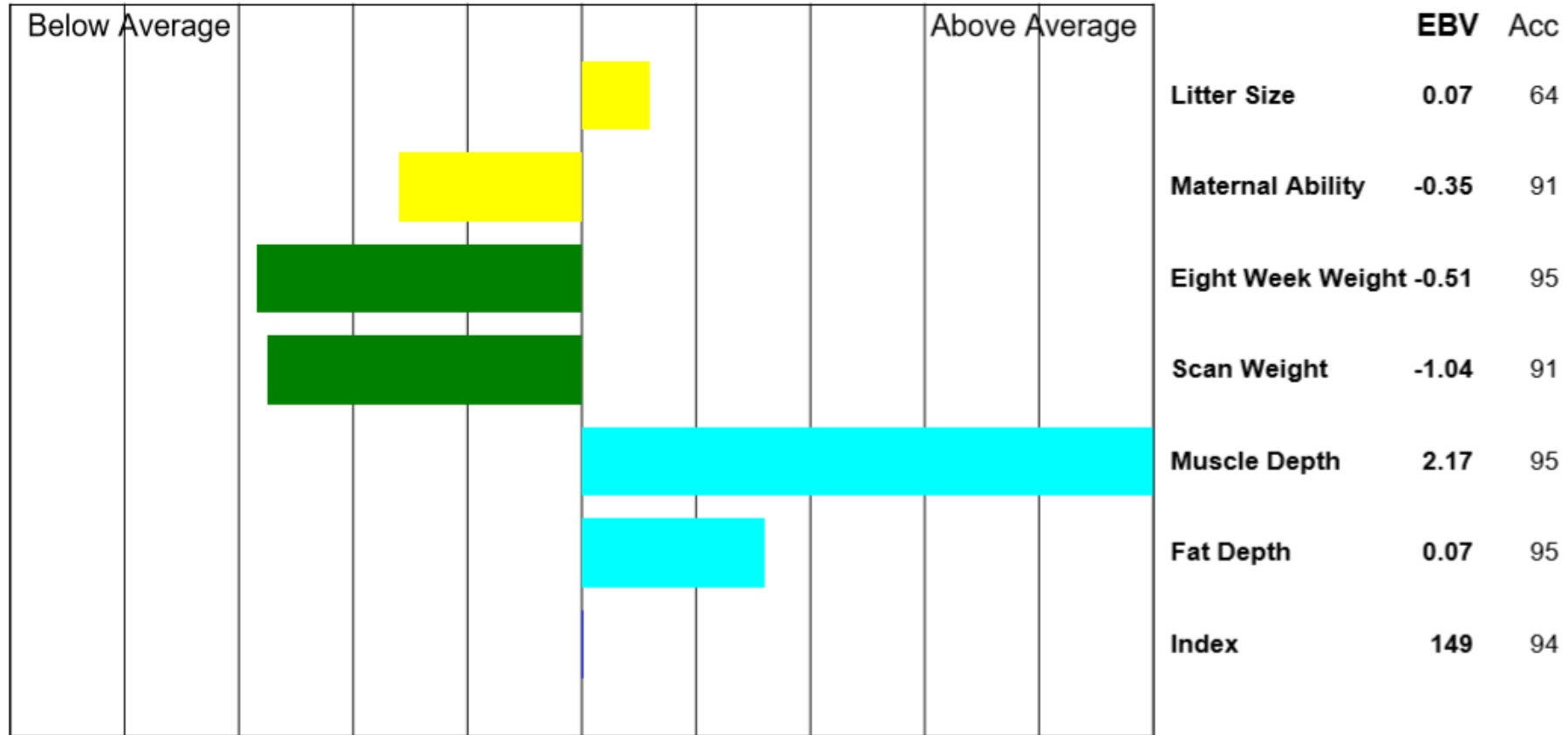
Ram 1's over all Slaughter price was £5.55 more than **Ram 2** after commission & Transport. (**real money 2018**)

£5.55 x **75** Lambs/year to slaughter = **£416.25**

£416.25 x Life of the ram (4 seasons) = **£1,665**

£1665 **MORE** income (on 1 ram) just by purchasing a ram with good EBV's and doesn't have to cost any more money.

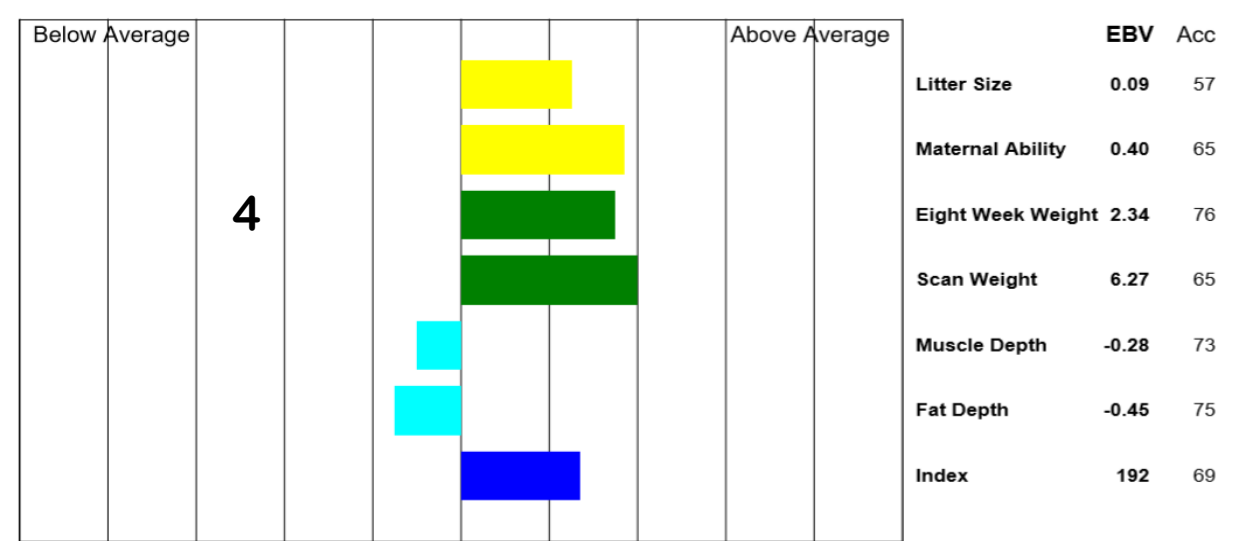
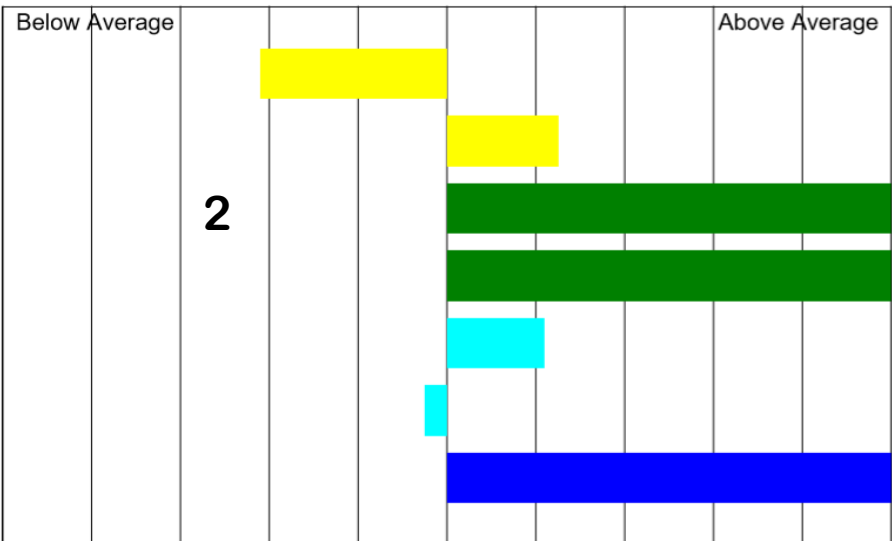
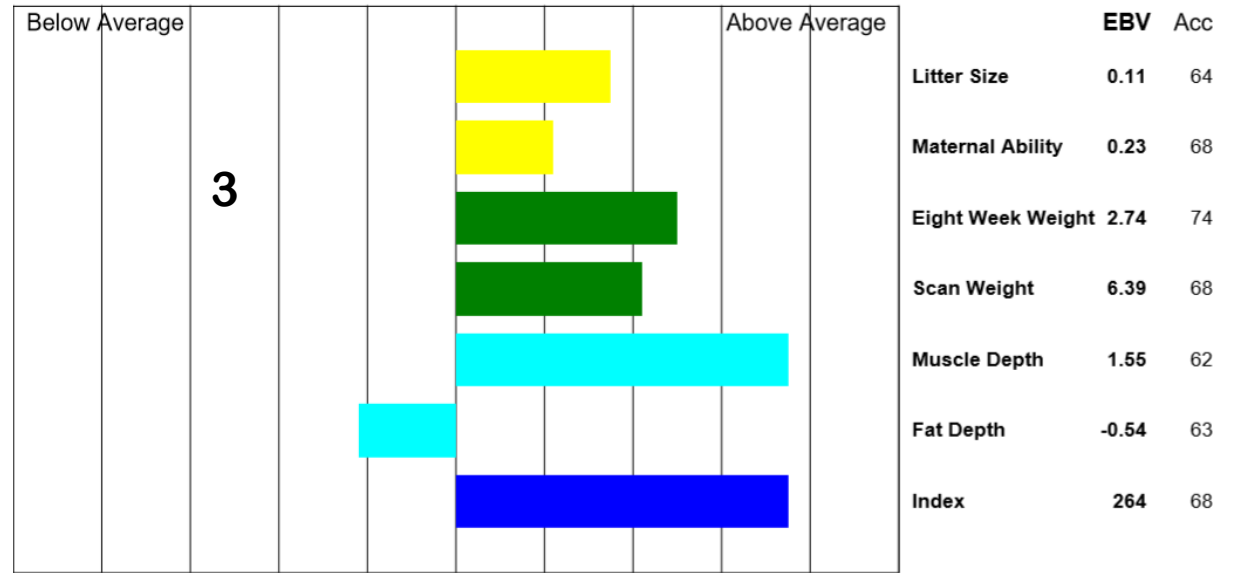
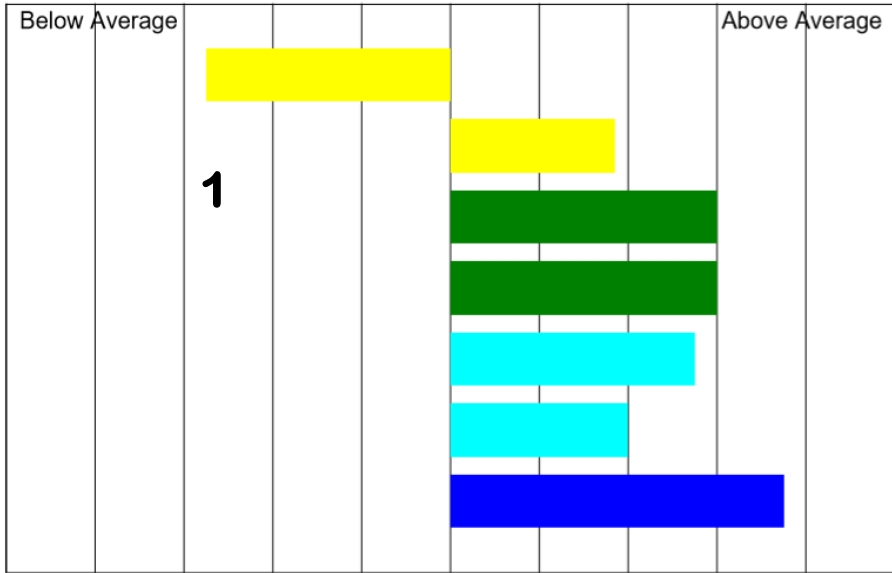
2018 Topping - Texel ram



Tups with low eight week weight & Scan weight EBV will have slower DLWG.

The Tup above had **30** of the remaining **100** lambs left on farm 2019 (15 sires used)

TEXEL TUPS ON TRIAL 2019/2020 SEASON



Its what suits **YOUR** system on **YOUR** farm!

Pick a breed that suits you-

A ram from **Breed A** killed out at **49%**

V's a ram from **Breed B** that killed out at **43%**

6% = 2.4kg carcass – 40Kg live weight

A Ram from **Breed C** killed **22%** of his lambs R Grades (78% E & U)

A Ram from **Breed D** killed **63%** of his lambs R Grades (37% E & U)

If your selling lambs as stores it doesn't matter about KO%
so you may look for growth?

To 12 weeks old. – (90 days)

A Ram from **Breed E** had 310g av DLWG

A Ram from **Breed F** had 230g av DLWG

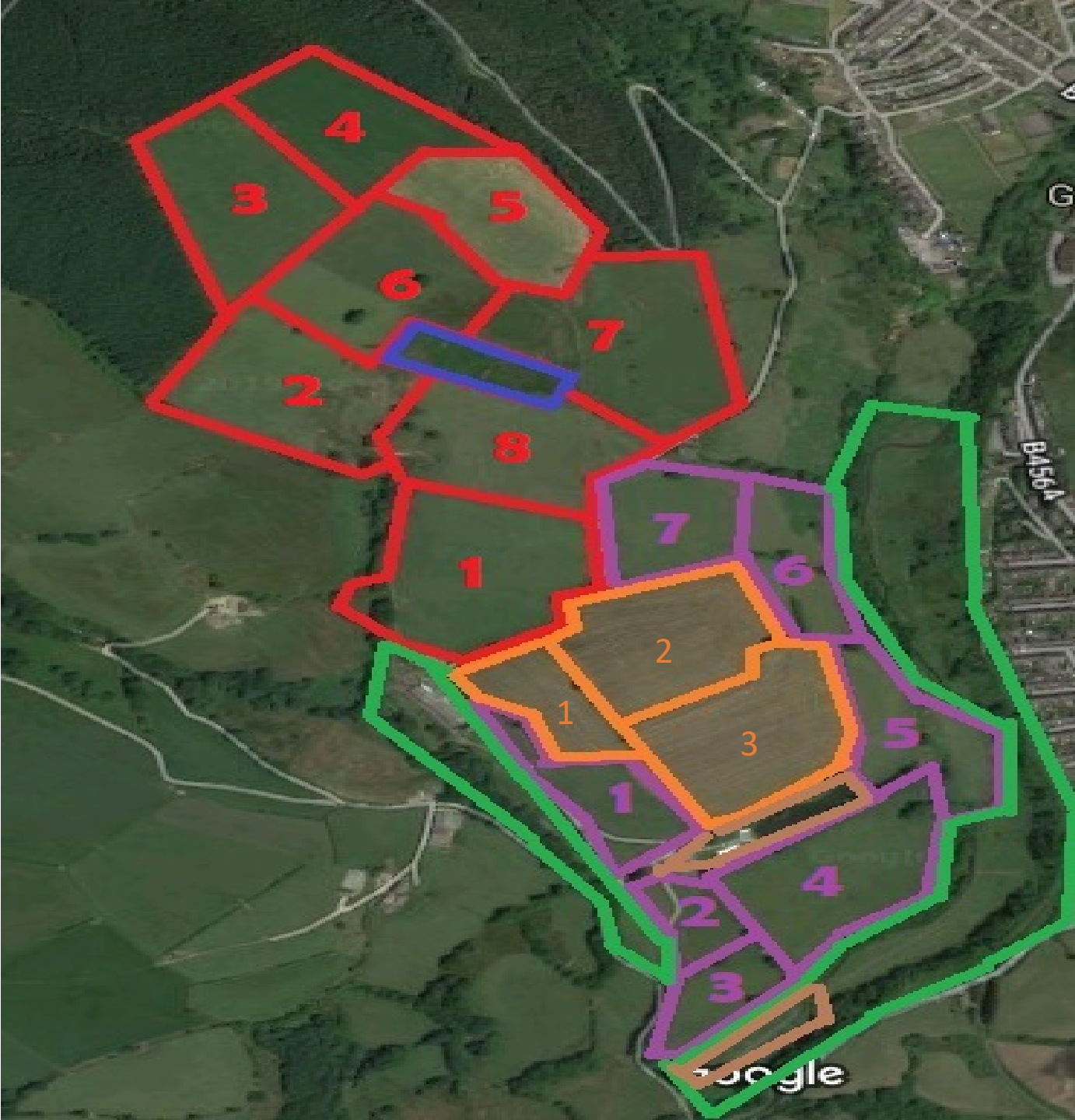
A difference of 7.2kg of live weight.

March 2018



March 2019





- * **Red – Rotation 1**
- * **8 x 10 acre fields.**
- * **2-3 day moves.(regardless of cover)**
- * **Enter field above 2200kg/dm/h**
- * **Exit field above 1700kg/dm/h**
- * **Aprox 1000 Head – (380 Ewes, 650 lambs)**

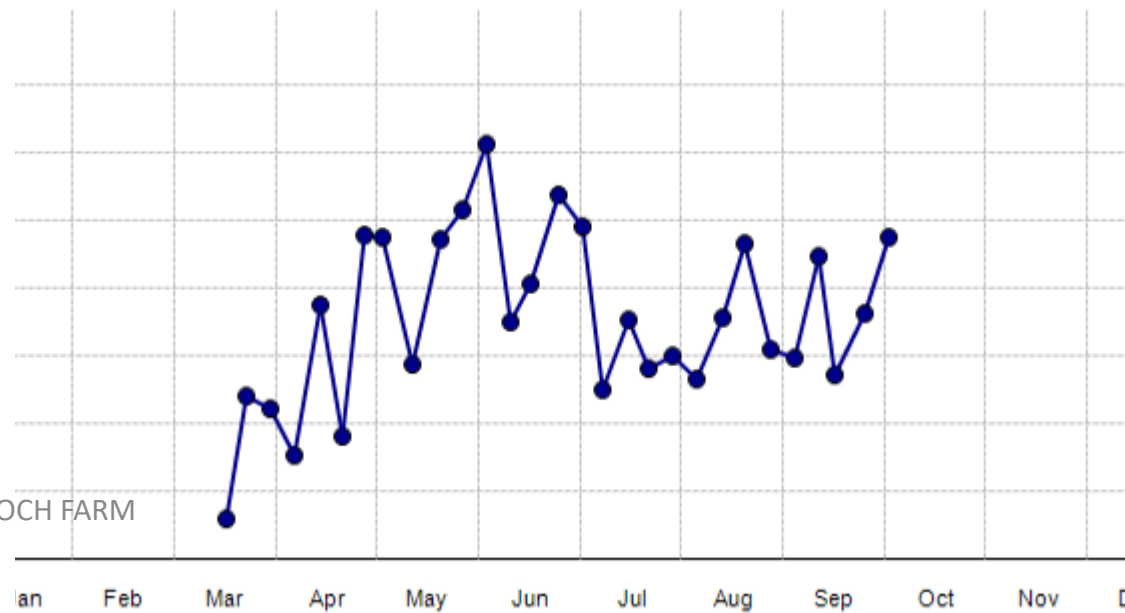
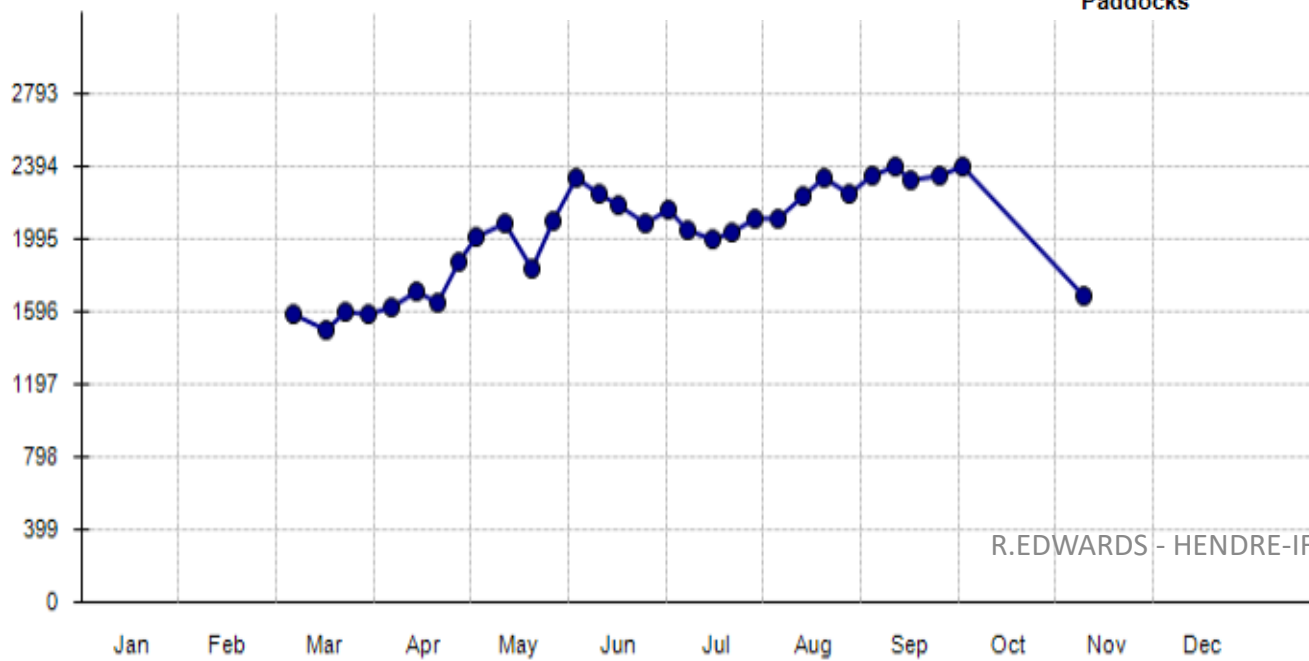
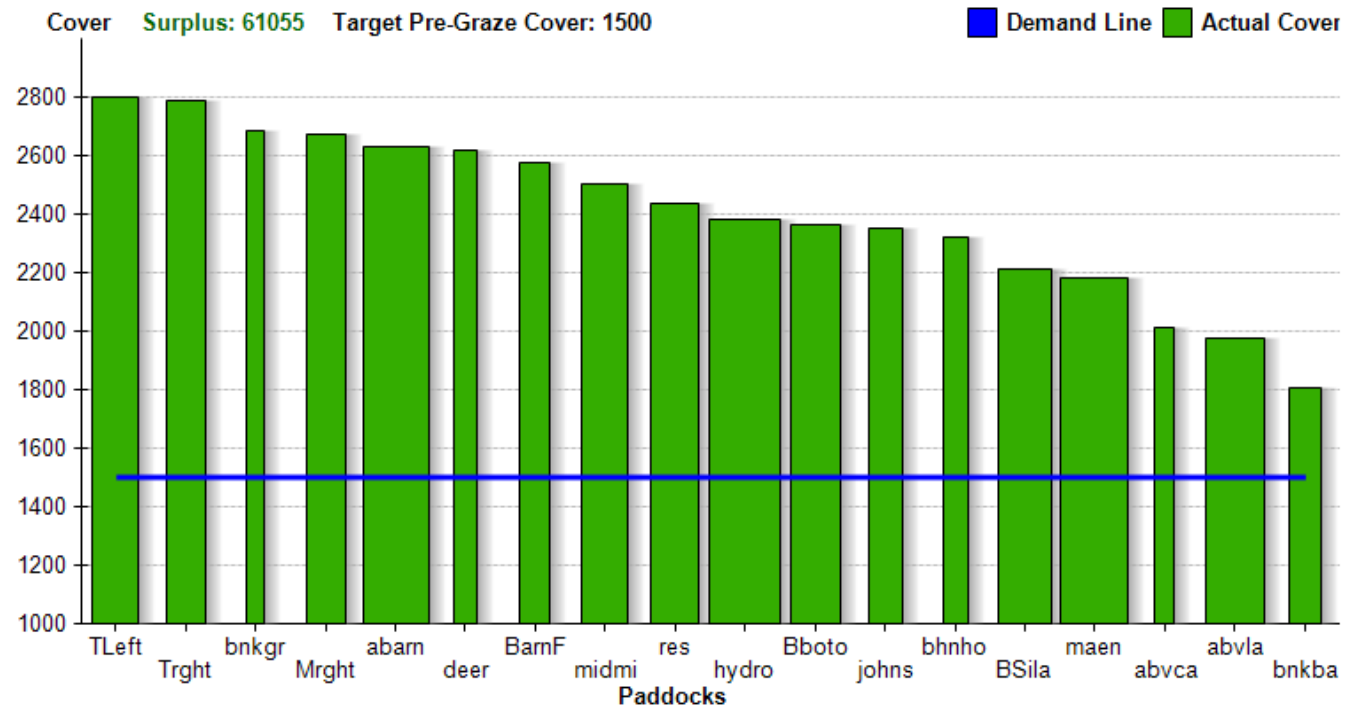
- * **Purple – Rotation 2**
- * **7 fields - 4-8 acres**
- * **10 fields after silage is cut.**
- * **Aprox 500 Head (180 ewes, 320 lambs)**

Cons

- * **Bigger bunch of ewes/lambs**
- * **Odd lamb miss mothers when first bunch up.**
- * **Bad weather when in certain fields.**

Pros

- * **Grow more grass,**
- * **Fresh grass for Stock every 2-3 days**
- * **Lambs Wean easier**
- * **Lambs Grow quicker to 12 weeks**
- * **Broken mouth ewes wean in good condition.**
- * **Quicker to check stock.**



‘To get results - you need to record’

‘You need a Benchmark to improve’

‘You cant manage what you can’t measure’

‘Fine margins add up’

‘You may not see instant results,
but the rewards will come in time!’

