

# British Wool LEARNING



## Wool Processing Terms

### 1 What is **shearing**?

Once a year, usually in the warmer months, sheep are gathered for shearing. This means that their thick winter coats of wool are cut - like a hair cut! A specially trained person called a shearer carefully shears one sheep at a time. One sheep can be done in less than two minutes, which means 250 sheep can be done in one day. It does not harm the sheep.

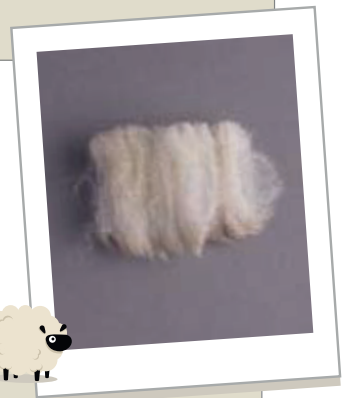


Shearing

2

### What is **raw wool**?

Raw wool is the name we give to wool that has come straight from the sheep's back which still contains grease and dirt.



4

### What is an **auction**?

An auction is a sale where people bid to buy something. British Wool holds regular auctions throughout the year at its Bradford headquarters.

3

### What is **grading**?

Specially trained people look at the wool and feel each coat or fleece with their hands so they can sort them into groups of the same type and quality, ready to be sold at auction.

5

### What is **scouring**?

Scouring means washing the wool to remove the grease and dirt.

6

### What is **carding**?

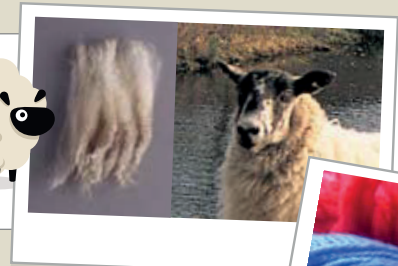
Carding gets the tangles out of the wool and helps to clean and pull apart the fibres of the wool.



7

### What is **combing**?

Combing wool is a bit like combing your hair. It helps to straighten long fibres and take out the shorter ones.



8

### What is **spinning**?

Spinning pulls out the wool fibres and adds a twist to make one long, strong thread. Different types of wool yarns can be made by twisting the wool in different ways. After spinning, yarns can be used in many ways including making cloth.

9

### What is **dyeing**?

Dyeing is when dye or colour is added to the wool. Colour can be added at many stages in the wool process.



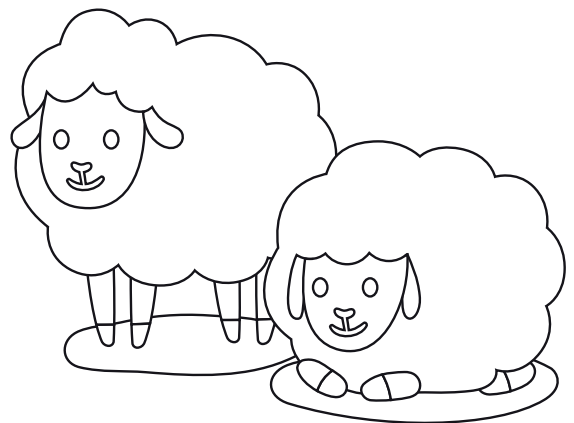
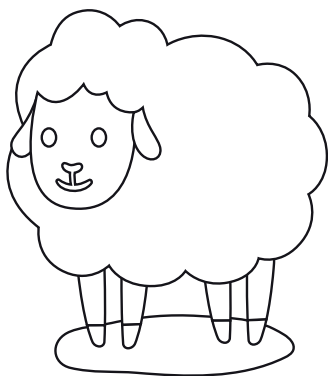
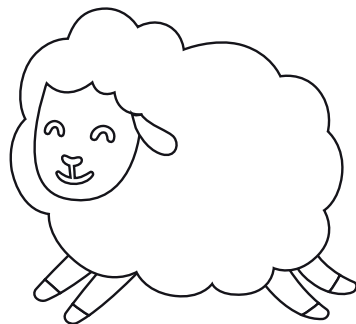
Dyed wool

LEARN MORE AT  
[britishwool.org.uk](http://britishwool.org.uk)

# British Wool LEARNING

## Colour in the ewes, jumping a rainbow

We would love to see your designs and a selection will be featured on NSA's social media pages – and in the next issue of Sheep Farmer magazine. To enter, post and tag your entry to Facebook or Twitter with @Natsheep and @BritishWool, or send a photo to [louise@nationalsheep.org.uk](mailto:louise@nationalsheep.org.uk). Don't forget to add your name, age, and county.



LEARN MORE AT  
[britishwool.org.uk](http://britishwool.org.uk)

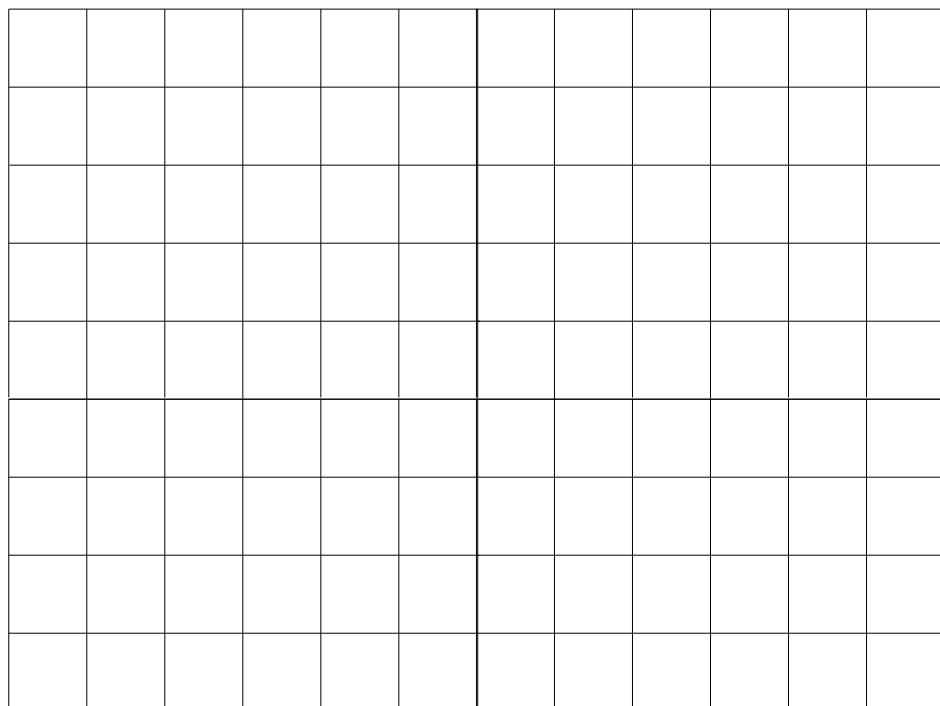
**Terms and Conditions** Please tag @Natsheep and @BritishWool on either Facebook or Twitter. Please only upload your own colouring-in sheets. By submitting your picture to NSA your details and image may be used on social media. Closing date to be in with a chance of being featured in the next Sheep Farmer magazine is Friday 24th July. By entering this competition you acknowledge that it is in no way sponsored, endorsed, administered or associated with Facebook or Twitter. All information provided by you is provided to NSA and British Wool and not Facebook or Twitter. Please do not share offensive or inappropriate comments or images, as they will not be entered into the competition. By submitting your picture you agree that all images and/or comments shared are provided to National Sheep Association and British Wool on a royalty-free, non-exclusive license to use, reproduce, modify, or publish for promotional or marketing purposes. Entries must be your own original work. If entering via Facebook, please check your privacy settings allow your photo to be shared publicly. The decision of the Promoter on all matters is final.

CHILDREN'S PULL OUT LEARNING BOOKLET WITH BRITISH WOOL AND NSA



## Design a farm

The farmer wants to build a new farm in the space available. Use this grid to design the new farm. There must be room for all of the things listed below.



House and garden = 9 squares



Lambing shed = 12 squares



Hen house = 4 squares



Animal food store = 6 squares



Duck pond = 4 squares



Small barn = 8 squares



Sheep field = 28 squares



Large barn = 15 squares



Dog kennel = 2 squares

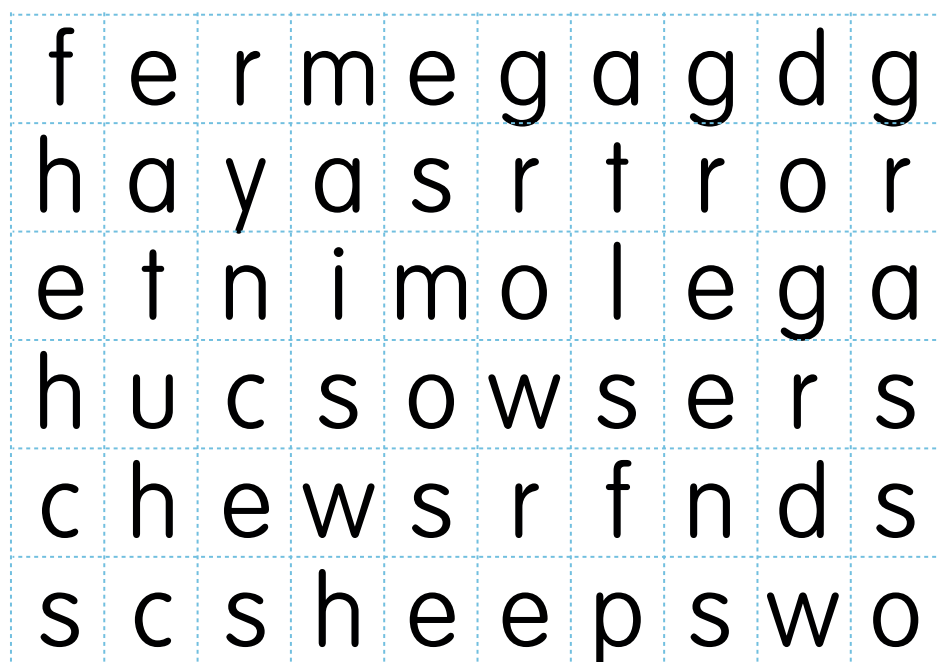


Tractor shed = 6 squares



Hay field = 14 squares

## Wordsearch



**Find the words.** Sheep love grass! Find the words about grass.

eat

grass

hay

chew

green

sheep

grow

dog



LEARN MORE AT  
[britishwool.org.uk](http://britishwool.org.uk)

# British Wool LEARNING

## How much does a sheep cost?

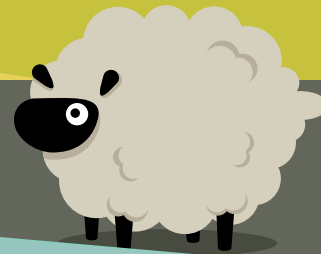
Selling wool from sheep can help the farmer to pay for other things that are needed to run the farm. Can you help the farmer work out how much it costs to run this part of his farm? Show your workings.

### The farmer has:

290 x Sheep  
2 x Sheep dog  
1 x Tractor



Income	
Sheep's wool	£480
Outgoings	
Sheep feed	£10 per bag
Dog food	£5 per tin
Fuel for tractor	£10 per week



The sheep eat 30 bags of food a week. How much does it cost to feed all the farmer's sheep for one week?

One dog eats 10 tins of dog food in one week. How much does it cost to feed all of the sheep and the dogs for a week?

When the farmer has fed his animals and filled the tractor up with fuel, how much will he have left from the sale of his sheep's wool?

How much would it cost the farmer to feed all of these animals and run the tractor for 4 weeks (one month)?



## Which sheep breed is behind the mask?

Your Answers: A \_\_\_\_\_  
B \_\_\_\_\_  
C \_\_\_\_\_



LEARN MORE AT  
[britishwool.org.uk](http://britishwool.org.uk)

Answers to all puzzles  
and questions available  
on NSA website.

STAY SAFE