



National Sheep Association

Who we are and what we do for the UK sheep sector





National Sheep Association



- Founded in 1892 (then the National Sheep Breeders Association) as a forum for progressive sheep breeders.
- Took on a broader role over the years and became NSA in 1969.
- Now represents the views and interests of all sheep producers throughout the UK under the banner of “**Striving for a sustainable and prosperous sheep industry**”. Our activities involve us in every aspect of the sector.
- NSA receives no Government funding or levies on meat or wool, relying instead almost entirely on the annual subscription of our farmer-based membership – **so every member counts.**





Our vision

The NSA vision is for people involved in keeping sheep to be enthusiastic, knowledgeable and aspiring to best practice ...



... and those not keeping sheep to be increasingly aware of the contribution sheep make to society and of the core aspects of the sector.





Our vision

One a day-to-day basis, this means

Supporting farmers



and promoting and protecting the industry



your business your future





Our work

Supporting farmers

A few examples ...

- Best practice information via NSA events, Sheep Farmer magazine and the NSA Weekly Email Update
- Support for members via phone/email, plus our Legal Helpline
- NSA Next Generation programme
- NSA ram sales
- Associate membership of Moredun
- Involvement in industry research

Promoting and protecting the industry

A few examples ...

- Regular engagement with Government departments at UK level and within the devolved nations.
- Response to anti-farming bodies and campaigns
- Ongoing work in the press and online to promote sheep as important for the economy, environment and society





Our work

Just a few topics NSA is involved in on a regular basis ... and the reason why the industry needs a strong voice

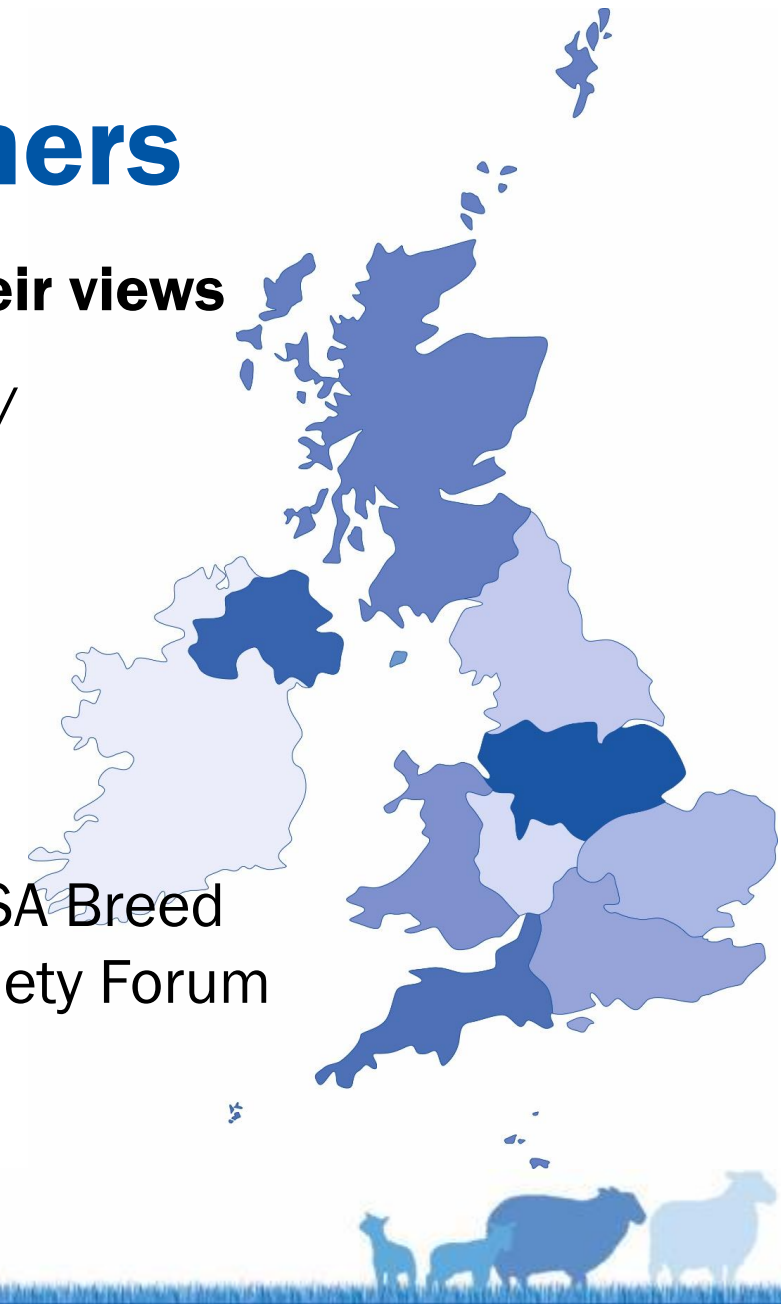
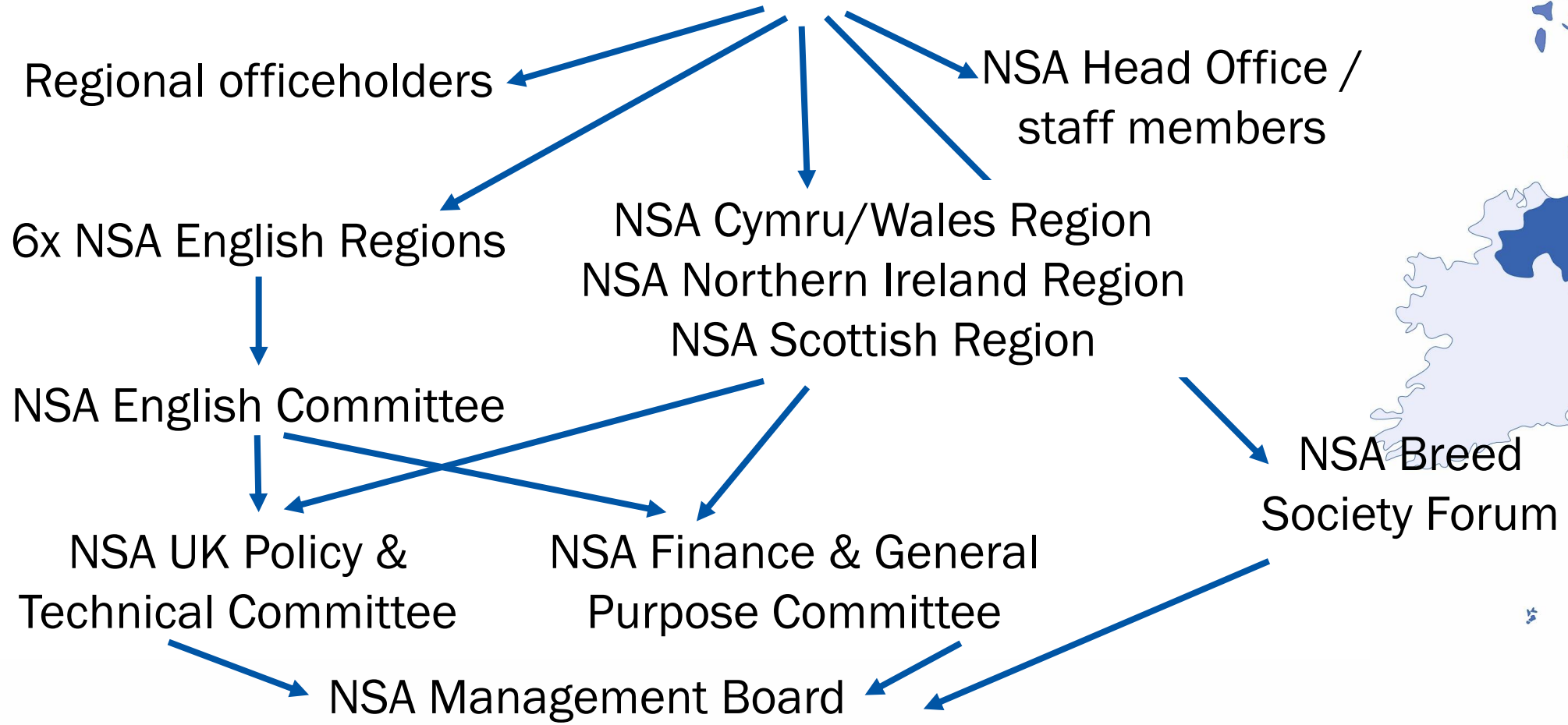
- Brexit
- Climate change
- Rewilding / release of lynx and wolves
- Claims of poor welfare (e.g. shearing)
- Being blamed for causing flooding
- Claims of over-grazing
- Dog worrying
- Cancer scares
- Perception of the countryside as a 'park'
- Live export concerns
- Imported product
- Religious slaughter concerns
- Falling domestic consumption
- Over-burdensome regulation (e.g. EID)
- The role of farm support ('subsidies')
- Poor export reputation
- Rural crime
- Poor perception of farming as a career





Representing sheep farmers

Lots of ways for grassroots farmers to feed in their views





Every membership counts

NSA relies on membership subscriptions to fund its work

The more members we have, the more we can do

NSA relies on membership subscriptions to strengthen its mandate when representing the sheep sector

The more members we have, the stronger our voice





Great value for money

Already a member?

Thank you!

Now recommend a friend or neighbour to join – and both get chance to win a top prize

Not a member?

Why not?! Join today to support NSA's work and access membership benefits





National Sheep Association

www.nationalsheep.org.uk

**For contact details, regional information,
event dates, membership forms and more**

